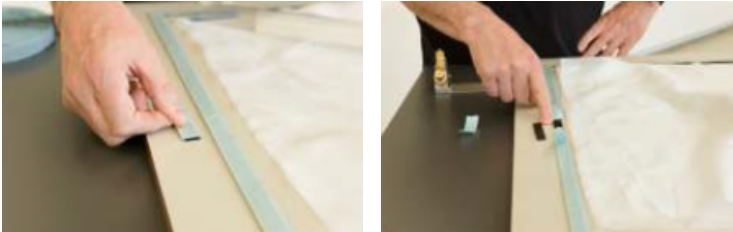


## USER MANUAL

### Step 1

Apply sealant tape around all parts of a vacuum repair. Place an extra 2" (50 mm) long piece of sealant tape ½" (12 mm) outside the vacuum bag sealant. Remove the backing paper from the sealant tape.



### Step 2

Place the SmartValve on top of the breather/bleeder pack and press the valve onto the sealant.



### Step 3



Place a long enough piece of sealant tape over the SmartValve and remove the backing paper when ready to place the vacuum bag.

### Step 4

Place a vacuum bag and press the bag onto the sealant tape on top and both sides of the valve. The SmartValve does NOT tilt without vacuum applied compared to standard valves. It stays upright with a vacuum gauge and heavy hoses connected to it.

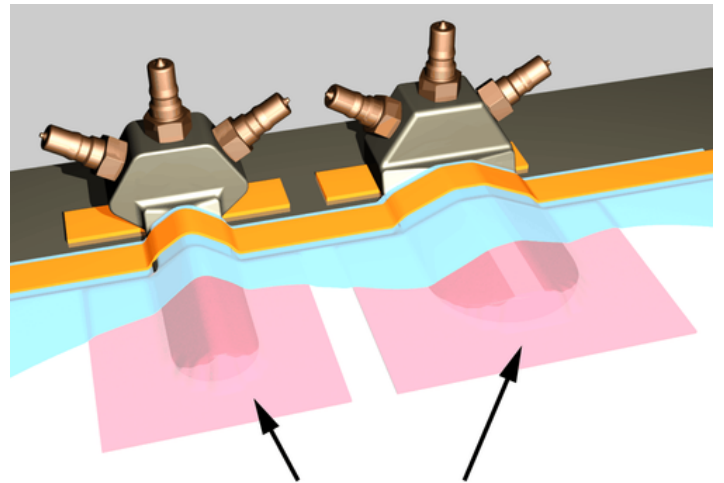
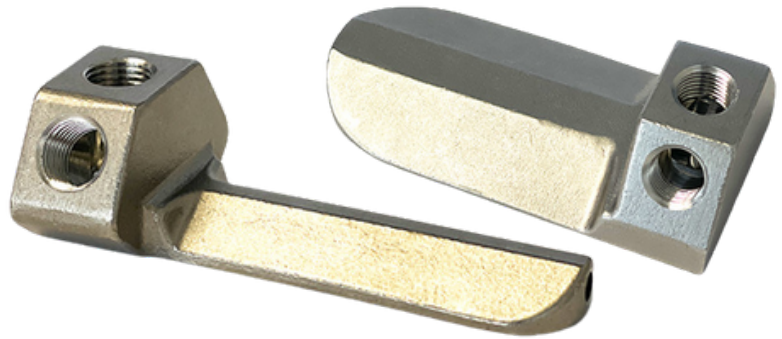


**SmartValves**  
**HCS1440-001**

Flat Surface

**HCS1440-002**

Single-Curved Surface



**Patches of breather cloth**

### Step 5

Apply vacuum as usual without holding the valve, while there is NO NEED to cut the vacuum bag! SmartValves can be connected to other SmartValves to get a more evenly distributed vacuum area on large vacuum tables or repairs and autoclaves.

